

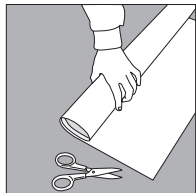
## Installing & Cutting Promenade and Lake Garda Glass Floor Tile

# ANN SACKS

Live creatively online at  
[www.annsacks.com](http://www.annsacks.com)

Promenade & Lake Garda glass floor tile is manufactured by fusing clear glass with ceramic glazes. These tiles may be installed on interior floor areas, in wet or dry locations. This glass floor tile is manufactured in 10 mm thickness for use as residential and light commercial floor tile. **Glass tile differs from ceramic products, so extra caution and attention to installation instructions is recommended.** Glass floor tile should not be exposed to high abrasion, high impact, thermal shock or installed over flexible surfaces.

### Substrate Preparation



*Since any crack in a glass tile is very visible, the use of a crack suppression membrane is strongly recommended. Many substrates may continue to cure and shrink over a period of months, and a crack suppression membrane prevents shrinkage or movement of the substrate to mirror through the tile.*

***If a crack suppression membrane is not used, neither the distributor nor the manufacturer will accept any responsibility should any cracking occur.***

*Install only over well-cured, stable substrates. Allow for an expansion joint whenever substrates change.*

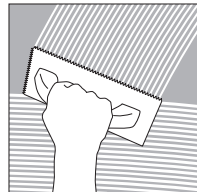
For membrane information contact  
**Protecto Wrap** [www.protectowrap.com](http://www.protectowrap.com)  
800-759-9727

**N.A.C.** [www.nac-anti-fracture.com](http://www.nac-anti-fracture.com)  
800-633-4622

**Mapei** [www.mapei.com](http://www.mapei.com)  
800-42-MAPEI

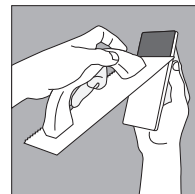
**Flex Guard**  
[www.flexguardproducts.com](http://www.flexguardproducts.com)  
800-279-7600

### Installation



Use a white thin-set mortar (2-component, flexible acrylic thin-set mortar system, such as Grani/Rapid by Mapei) formulated for interior floor installa-

tions. Spread the adhesive with a notched trowel following the manufacturer's recommendations (in many cases a 1/4" X 1/4" square notch trowel will work well). **Do not overbuild the adhesive, as it may shrink and add stress to the glass.** Spread only as much adhesive as will be covered with the tile within 15 minutes.



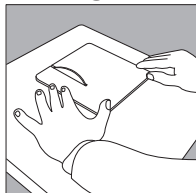
Always "back-butter" each piece of glass floor tile with the flat edge of the trowel to provide a void-free installation and good contact with the mortar bed. Care-

fully press the glass against the surface to prevent the notch marks in the adhesive from showing through the glass.

Install the glass floor tile, leaving even spacing between tiles of at least 1/8" (3mm). Use plastic spacers whenever possible. Install control joints where the tile abuts restraining surfaces and around the perimeter of the tile work. Allow the adhesive to cure according to the adhesive manufacturer's instructions (at least

24 hours). Grout with sanded grout; care should be taken not to grind the grout into the surface of the tile so as to prevent scratching of the surface.

## Cutting



**Promenade and Lake Garda** glass floor tile must be cut on a wet-saw with a blade that is designed for cutting glass or similar materials. Note: Straight cuts

generally do not result in additional stress to the glass floor tile, but notched cuts may add stress and cause cracking of the glass. *Keep in mind that in many cases it may be easier and less expensive to mark your cuts and take the tile to a professional glass shop for cutting or drilling*

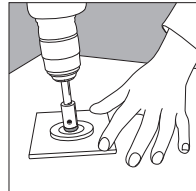
Use a diamond blade designed for cutting glass on a wet saw. A blade for cutting glass is thin, has smaller diamonds than a tile blade, has a continuous rim and generally runs at a slower speed. *Note: A blade designed for cutting ceramic tiles is coarse and will chip the glass.* ANN SACKS offers an exclusive 4" electroplated diamond blade and spray guard assembly for an inexpensive wet saw manufactured by Plasplugs (www.

plasplugs.com 800-966-6400). Also available is a 7" blade for use with the MK Diamond tile saw (www.mkdiamond.com 800-845-3729). Makita (www.makita.com 800-4MAKITA) makes a battery operated saw (model 4190DW equipped with 724-950-8V glass blade) that is suited for small cuts on glass.

A lapidary blade will also cut glass tiles cleanly.

**Cutting Curves** – A ring or band saw designed for cutting glass makes cutting curves easy. Contact Gemini Saw www.geminisaw.com 310-891-0288 or Diamond Tech www.diamondsaws.com at 800-937-9593.

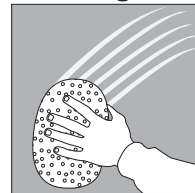
## Drilling



Drilling a hole requires the use of a drill bit or coring drill that is designed for glass – if the drill and glass tile cannot be securely clamped in place, drill a small pilot hole through the glass to act as a guide. Always use a proper glass drill bit, keep the drill bit and hole lubricated with turpentine or water and drill at very slow speed. Start drilling from the back of the tile, then

complete the hole by drilling from the face of the tile. Attempting to drill all the way through the tile from one side will cause the glass to chip off on the exit side of the hole. *Important – Drill a hole 1/8" (3mm) larger than any anchors you plan to use. This will prevent stress transfer from the fixture to the glass tile. Ensure anchors are well secured to the structure (not only to the substrate) and do not allow fixtures to rest directly on the glass.*

## Cleaning



For routine cleaning, use any non-abrasive cleaning compound recommended for either glass or tile. Follow rinsing instructions carefully. A penetrating sealer may be used to facilitate clean up of frosted and textured glass.